

I N D E S  R E ¹²

S w e a t e r L i m i t e d

Deger Chala, National University, Gazipur Sadar,
Gazipur, Bangladesh

www.indesore.com

p r o f i l e

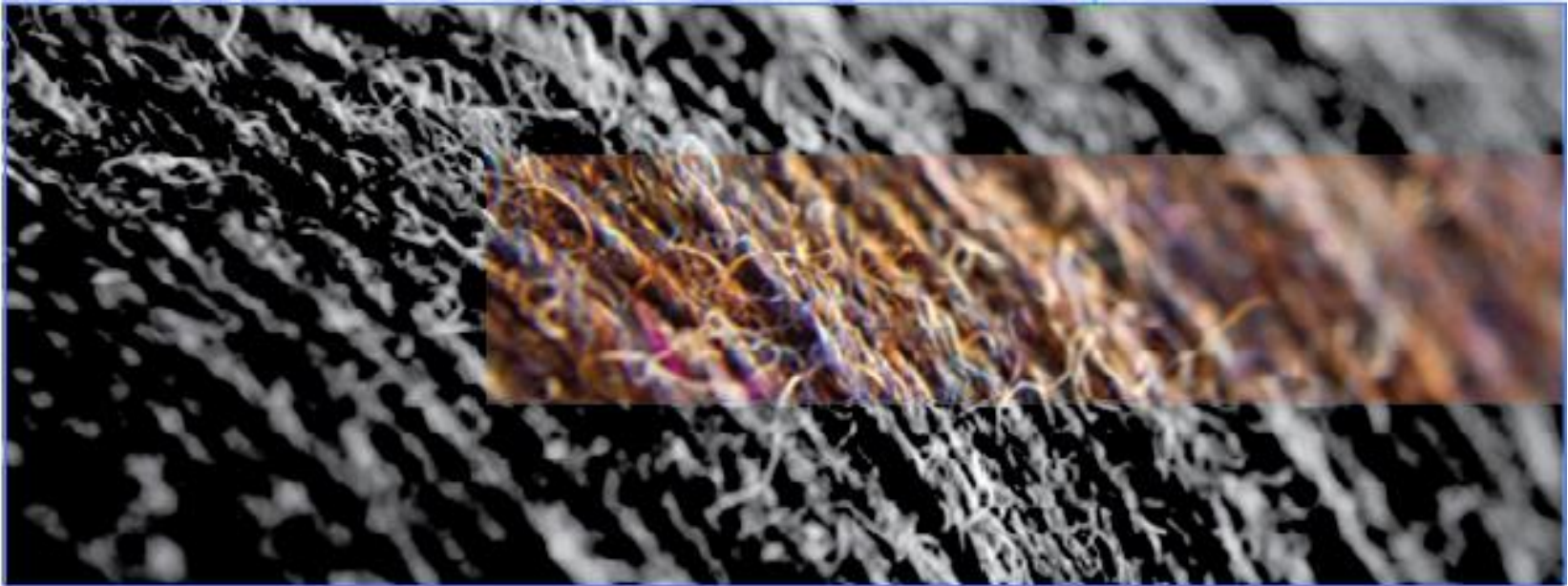
contents

Introduction
Products
Customers
Certifications
Factory Details
List Of Machineries
Facilities
Product Health
Social Responsibility
Contact
Conclusion

Introduction
Products
Customers
Certifications, Hallmarks & Recognition
Factory Details
List Of Machineries
Facilities
Product Health
Social Responsibility
Contact
Conclusion



introduction



indesore sweater limited is a modern sweater factory equipped with the latest and branded machineries from China, Taiwan, Japan, U.S.A, Italy, Turkey and U.K. The Bangladeshi sweater manufacturer's shares in global market are steadily growing in the wake of success of the ready-made sweater and also ready-made garments sector. indesore sweater limited is also willing to compete in the global market to provide high quality sweaters to the buyers and achieve it's desired goal. More over indesore sweater limited wants to prove itself as a well designed and well equipped sweater factory in Bangladesh, with skilled workers, relaxed working atmosphere and green environment.

indesore sweater limited ensures a healthy and breathing environment to it's workers, staff and the buyers. Safety and quality is a high priority for factory management.

This unit comprises of qualified and skilled workers with expert technicians. We are running with progressive management techniques and effective employee programs. indesore sweater limited also provides advanced training to it's staffs for healthier productivity as well as modern and better quality products.

indesore sweater limited is capable to produce high quality sweaters and able to sell it to the buyers of all over the world.



ITEMS

All kind of sweaters in 12, 5 & 7 gauge,
Made on hand driven needle bed machines
and automatic jacquard machines.

RANGE

- INFANT
- BOYS
- GIRLS
- MENS
- LADIES



- H&M: Children, Men's & Ladies
- Celio: Men's
- Esprit: Ladies & Men's
- ZARA: Children & Ladies
- MYER : Ladies
- OVIESSE: Men's, Ladies & Children
- Ralph Lauren: Men's, & Children
- Guess: Men's, & Ladies



factory details



PRODUCTION CAPACITY :

The production capacity of Indesore sweater Limited is around (5,00,000 pcs) per month.

TURNOVER:

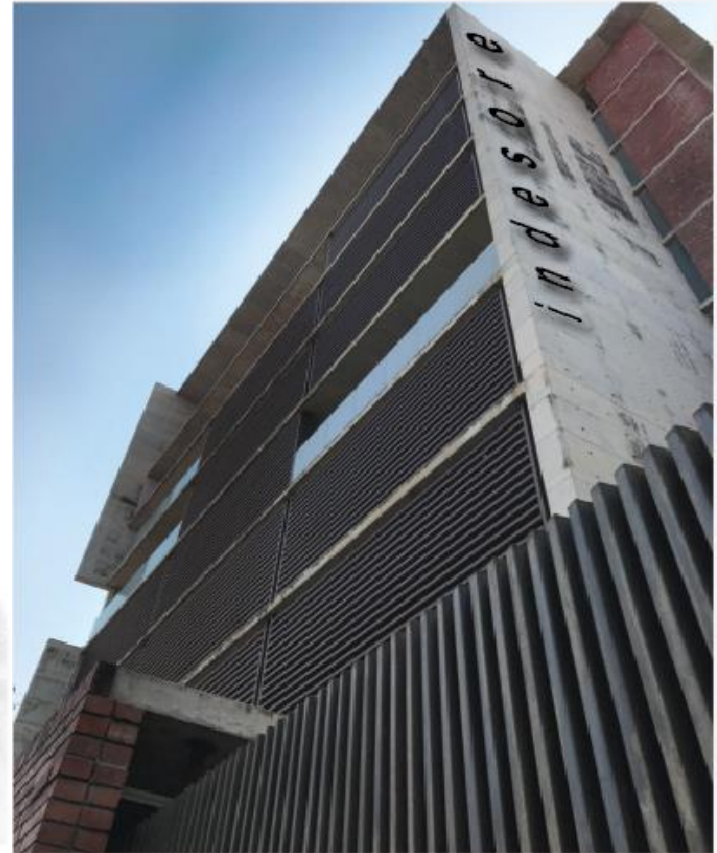
The annual turnover of the factory is around 30 mUSD.

WORK FORCE:

Approximately 3,000 workers and staffs will work together in the factory.

CURRENT FACILITY:

Total Space	:	2,86,476 Sqft. (Approx)
Work Space	:	2,73,000 Sqft. (Approx)
Washing Space	:	7,000 Sqft. (Approx)
Office Space	:	6,476 Sqft. (Approx)



list of machineries



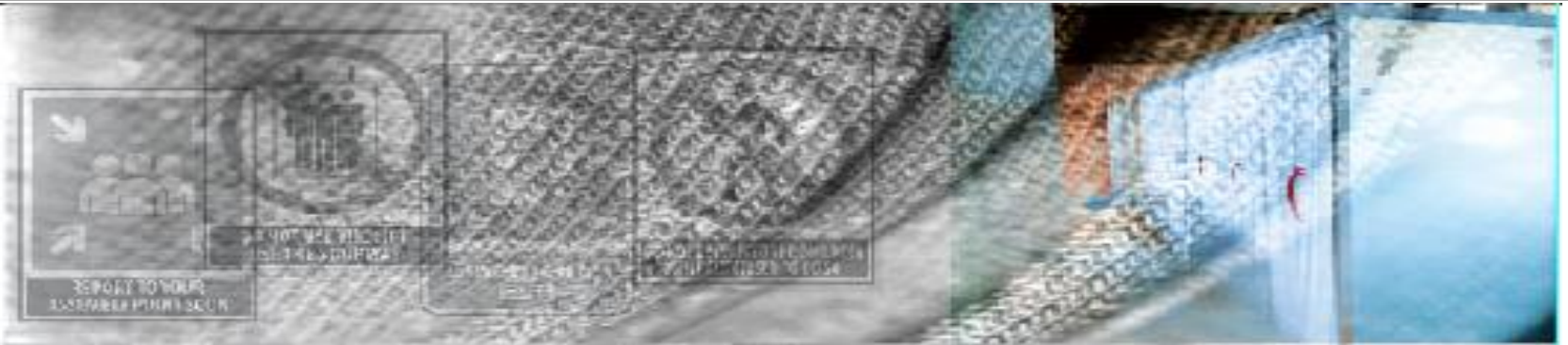
Sl.No.	Particulars of the Machinery	Type	No. of Machine	Brand	Origin	
01	Computerized Flat Knitting Machine	14gg(7/10/12/14) 48*	85	Shima Seiki	Japan	
		7gg(3.5/5/7) 48*	17		Japan	
		3gg(1.5/2/3) 48*	1		Japan	
02	Computerized Flat Knitting Machine	12gg, 52"	346	Guosheng, Hongqima, Mingde, Julong, Jinhao, Huma	China	
		12gg, 48"	135		China	
		12gg, 44"	120		China	
		7gg, 52"	56		China	
		7/5 Multi gg, 44"	16		China	
		7/5 Multi gg, 48"	63		China	
		5gg, 52"	8		China	
03	Winding Machine	8 Spindle	22	D.H.Euro	China	
	Winding Machine	48 Spindle	1	HI TECH	HKG	
	Winding Machine	24 Spindle	2			
	Winding Machine	8 Spindle	1			
Knitting Auto Transfer	2 X 1	675				
04	Knitting Auto Transfer	2 X 1	675	D.H.Euro	China	
05	Semi Auto Knitting Machine	12gg, 36"	10		China	
06	Auto Placket Machine	12gg	17		China	
07	Dial Linking Machine	6gg	18		China	
08	Auto Drawstring Machine	12gg	4		China	
09	Dial Linking Machine	10gg	1		China	
10	Dial Linking Machine	5gg	1		China	
11	Dial Linking Machine	8gg	114		China	
12	Dial Linking Machine	14gg	241		China	
13	Dial Linking Machine	16gg	345		Feng Shen	China
14	Overlock (Model-MO6714SBE644H/G39/Q141)	4 Thread	24		JUKI & BROTHER	Japan
15	Button Hole (Model-LBH783NV)	Plain	18			
16	Button Stitch (Model-LK1903ASS301/MC596KSS)	Plain	14			
17	Bartek (Model-1900ASS/MC596KSS)	Plain	20			
18	Flat Lock Machine	5 Thread	3			
19	Plain Machine (Model-DDL8300N)	Single Needle	102			
20	Washing Machine 110 LBS full automatic		8	NGAI SHING	China	
21	Hydro Extractor (Capacity-200 LBS)		7		China	
22	Auto Gas Dryer	Gas,200Lbs	5		China	
		Steam,200Lbs	7		China	
23	Auto winding machine	60 Head	2		China	
24	Vacuum Table with Industrial Steam Iron		127		China	
25	Dust Cleaner		8		China	
26	Needle Detector [30+(22X5") Aperture		1	Lock	UK	
27	Needle Detector [30+(22X5") Aperture		1	Syntex	China	
28	Needle Detector [600MM (W) X 1500MM(H)]		2			
29	Boiler (Capacity - 939kg each)		2	Fulton	U.S.A	
30	Boiler (Capacity - 1565kg)		1	Fulton	U.S.A	
31	Boiler with Double Burner (Diesel + Gas) Capacity - 01 ton		1	NGAI SHING	China	
32	Mini Electric Boiler for Sample Room (Capacity 24 kgs)		1	NGAI SHING	China	
33	Diesel Generator-Capacity 650 KVA		2	FG Wilson	UK	
34	Bus Bar & Trunking		Full Set	Graziadio	Italy	
35	Cooling Fan		30		Italy	
36	Light Check		12 set		Bangladesh	
37	SafQ Snap Testing Apparatus with several testing kits		1	SafQ	Japan	
38	Moisture Meter		1	Aqua Boy	Germany	
39	Light meter	LUX Meter	1	Model LX-101	Taiwan	
40	Snap Button Machine		1		China	

facilities



- Open space for work as per the internationally accepted compliance law.
- Day-care center for the babies of the workers as per labor law policy, (i.e. clause no 94 of page 9098 in 8th episode of the labor law act 2006).
- Medical room with specialized doctors and nurses with emergency supporting equipments & medicines as per labor law policy. (i.e. clause no 89 of page 9096 in 8th episode of the labor law act 2006).
- Space for prayer is available for the staff and workers.
- Dining room facility for the staff and workers as per labor law policy. (i.e. clause no 92 of page 9097 in 8th episode of the labor law act 2006).
- Cooling fan is using for dust free breathing environment and to make the floor cool.
- 24 hours standby generator facility.
- Lift facility along with adequate stairs for the staff & workers as per labor law policy. (i.e. clause no 69 of page 9088 in 6th episode of the labor law act 2006).
- Clean and hygienic environment everywhere.
- Modern Fire fighting equipments and easy evacuation plan for emergency exit as per labor law policy. (i.e. clause no 62 of page 9085 in 6th episode of the labor law act 2006).
- Group insurance for all staff & workers as per labor law policy. (i.e. clause no 99 of page 9099 in 8th episode of the labor law act 2006).
- A well designed lay out & fire evacuation plan for easy exit.
- Indesore Sweater Ltd is fully equipped with PA system & CC Camera.

facilities



The following subjects will be treated as the effective facilities for our factory to ensure the working environment healthy and safe.

- Toilet : The most important issue for a factory is clean & hygienic toilets. indesore sweater limited arranged an adequate number of toilets & urinals for the workers & staff and maintained properly to minimize the sickness.
- Pure Drinking Water: We have installed complete pure drinking water system from China fully equipped with Multimedia filter, Activated Carbon filter, Water Softer & RO system to have safe water for everyone in the factory.
- Lift : Lift facility is much more important for a modern factory. indesore sweater limited has both cargo and passenger lift facility for the betterment of the factory.
- Floor Plan : Working environment and productivity depends on the adequate and effective floor plan. indesore sweater limited provide it's staff a spacious and easy going corridors & space for easy working.
- Evacuation Plan : Evacuation plan is very much important for a factory to save the life of the workers & staff if any accident occurs.

indesore sweater limited arranged a well designed evacuation plan with 4 wide stairs to evacuate as soon as possible for saving life and important documents or assets.

facilities



medical facility



I N D E S W E A T E R
S w e a t e r L i m i t e d



profile

certifications & hallmarks



amfori
Trade with purpose



BSCI

ACCORD
on Fire and Building Safety in Bangladesh



Sustainable Apparel Coalition



CHILDREN'S RIGHTS AND BUSINESS PRINCIPLES

BetterWork

CONFIDENCE IN TEXTILES
Tested for harmful substances according to Oeko-Tex® Standard 100 12.HUS.15194 Hohenstein

PaCT
Partnership for Cleaner Textile

Empowering responsible supply chains



IPE
Institute of Public & Environmental Affairs
公众环境研究中心

GLOBAL ORGANIC TEXTILE STANDARD
GOTS
CERES-0436

ORGANIC BLENDED content standard
CERES-0436

ORGANIC 100 content standard
CERES-0436



WORLDWIDE RESPONSIBLE ACCREDITED PRODUCTION
WRAP
Certified Facility

Global Recycled Standard

RECYCLED BLENDED claim standard

RECYCLED 100 claim standard



WORKPLACE CONDITIONS ASSESSMENT

I N D E S W E A T E R L I M I T E D

Accord recognized Indesore Sweater Ltd.
For a successful completion of all remediation
measures from the Accord initial inspection on
Electrical, Fire & Structural Safety

ACCORD

on Fire and Building Safety in Bangladesh

Letter of Recognition

The Accord on Fire and Building Safety (Accord) hereby recognizes that:

Indesore Sweater Ltd. (9492)
Dager Chala, National University, Gazipur Sadar, Gazipur

Has successfully completed all remediation measures required from the Accord initial inspections for fire, electrical, and structural safety conducted in August 2014.

Accord engineers have physically verified that all items of the corrective action plan, developed from the Accord initial inspections and approved by the Accord Chief Safety Inspector, have been correctly repaired¹.

The Accord initial inspections covered minimum life safety issues in the areas of fire, electrical, and structural safety based on an inspection standard developed with the Government of Bangladesh and national and international safety engineers through the facilitation of the ILO.

Factory safety is a continuous process which requires regular monitoring, maintenance, and in-factory safety systems and practices. The Accord will continue to support the factory managers and workers in institutionalizing and further advancing such culture of safety and health at the factory.

The Accord extends our congratulations to ***Indesore Sweater Ltd. (9492)*** for achieving this safety milestone.

Rob Wayss
Executive Director
Stichting Bangladesh Accord Foundation
Accord on Fire and Building Safety in Bangladesh

Date: 21/10/2019

¹ This letter of recognition verifies that the factory has successfully remediated all items from the limited initial Accord inspection, and that the items in the corrective action plans were in a correct state of repair at the time of the verification inspection. This letter of recognition should not be considered to be a certification or endorsement on the part of the Accord.

product health



We ensure Button Pull test check for the baby product

We make sure the hazards chemical free product as per international law.

We have 100% needle detection for the garments to make sure metal free product

We always use oekotex certified yarn & accessories.

We ensure insect free environment for the garments.

We control moisture with in acceptable limit.





Water: We have Effluent Treatment Plant (ETP) to treat water before discharging into nature. As per our social responsibility we ensure complete treatment of used water before discharging to the environment.

Electrical Safety: We are using complete BUS-BAR TRUNKING system from Italy & Turkey to ensure safe wiring of electricity thus saving of the energy & safety of the factory.

Energy: We are using complete LED light source (Light Emitting Diodes) from China for the full factory which help us to save more than 50% energy and thus more effective, social, friendly.

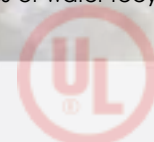
Fire Safety: Smoking Detection System- we have installed addressable smoking detection system from UK which ensures immediate finding out the emergency location. More over we have MIMIC DISPLAY from UK which is a most modern technology in this category that gives you visual display of floor lay out indicating with a light exact pointing to the emergency place.

Hydrant System: We installed complete automatic Hydrant System from UK & Malaysia with Jockey Pump, Electric Driven Pump, and Diesel Pump along with most modern Hose, Pillars, and Extinguishers etc.

Sprinkler System: We have installed automatic Sprinkler system from UK to have more safety in regards to fire.

Fire Door: We have installed UL Rated fire doors from National Fire Fighting Manufacturing NAAFCO (FZCO) Dubai to ensure safety of the workers.

ETP Treated Water recycle: We are reducing apperx. 10% Production water consumption by the process of water recycle, which is treated by the ETP.



Factory

Deger Chala,
PO. National university, Gazipur Sadar.
Gazipur, Bangladesh.
Telephone : 88 02 9293771
Fax : 88 02 9293780
E-mail : info@indesore.com

Bank Details

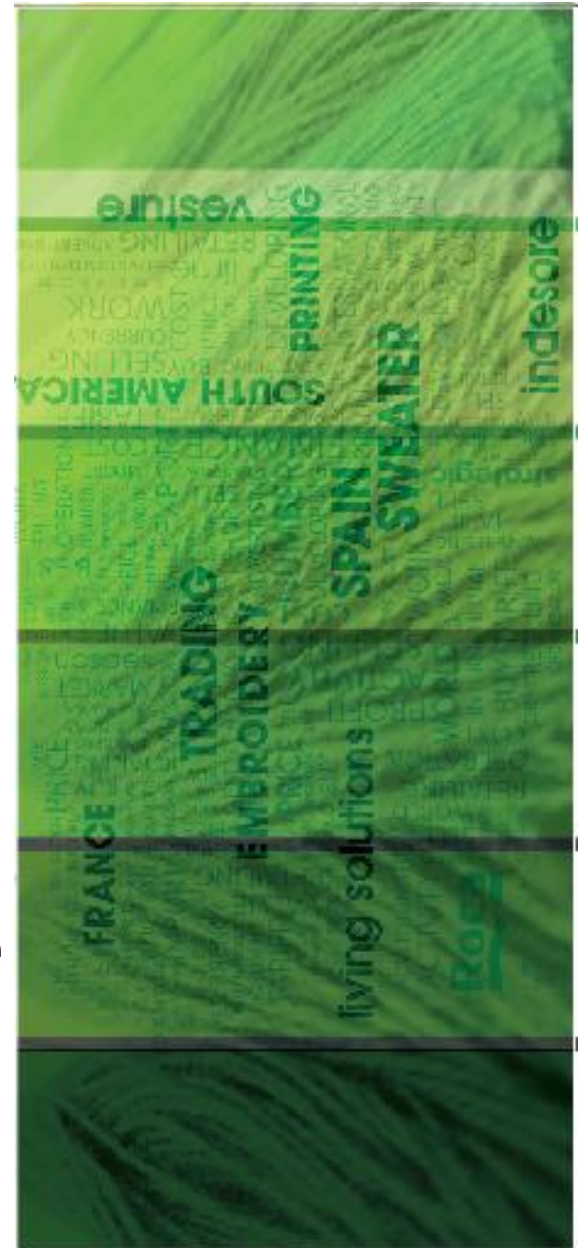
The City Bank Limited
Gulshan Avenue Branch
City Bank Center, (2nd Floor)
136, Gulshan Avenue, Gulshan-2, Dhaka-1212.
Phone # +88 02 8813483 / 8814375, Ext-1391
Swift Code : CIBLBDDH,
E-mail: noon.hossan@thecitybank.com, tsd@thecitybank.com

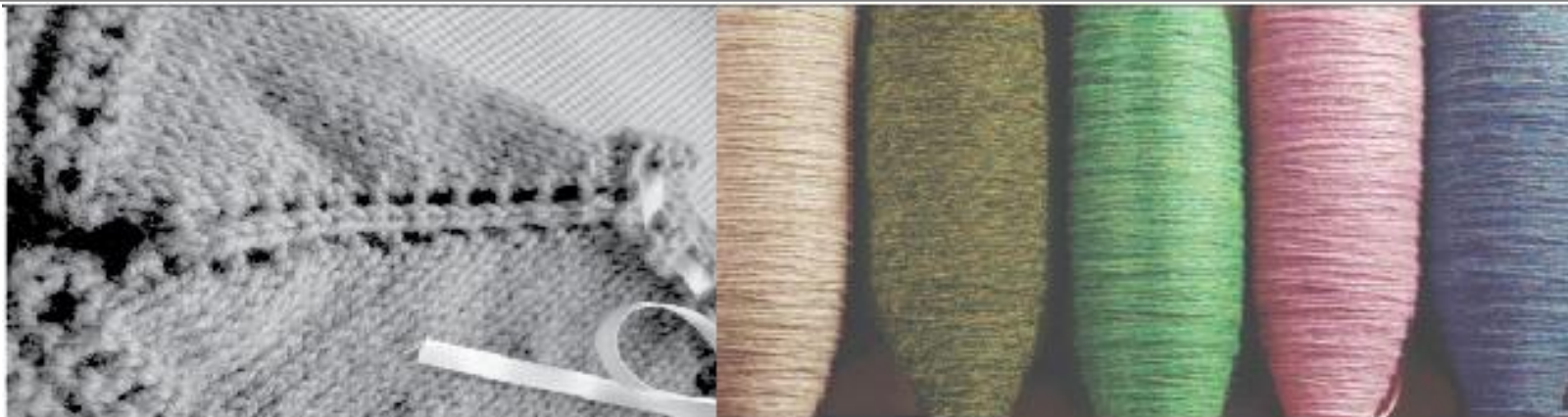
Contact persons

Tareaq TAREAUZZAMAN
Managing Director
Contact : 017 130 31 138
E-mail : tareaq@indesore.com

Milon ROKUNUZZAMAN
Chairman
Contact : 017 115 60 770
E-mail : milon@indesore.com

enquiry : info@indesore.com





Indesore sweater limited mainly focused on the best quality product with the most modern machineries and equipments and also the most effective organizational policies as well as the experienced workers, we can say that we will be able to enter in the market promptly and achieve the desired goal.

Finally our technically sound, well experienced, professional and dedicated workforce of each department and product fiscal management have placed us in a position to produce high quality sweaters and deliver in time to the entire satisfaction of our valued customers and assure to provide the best service out of Bangladesh.

Thus with a corporate social responsibility, we would like to stand in the global market with our signature image.